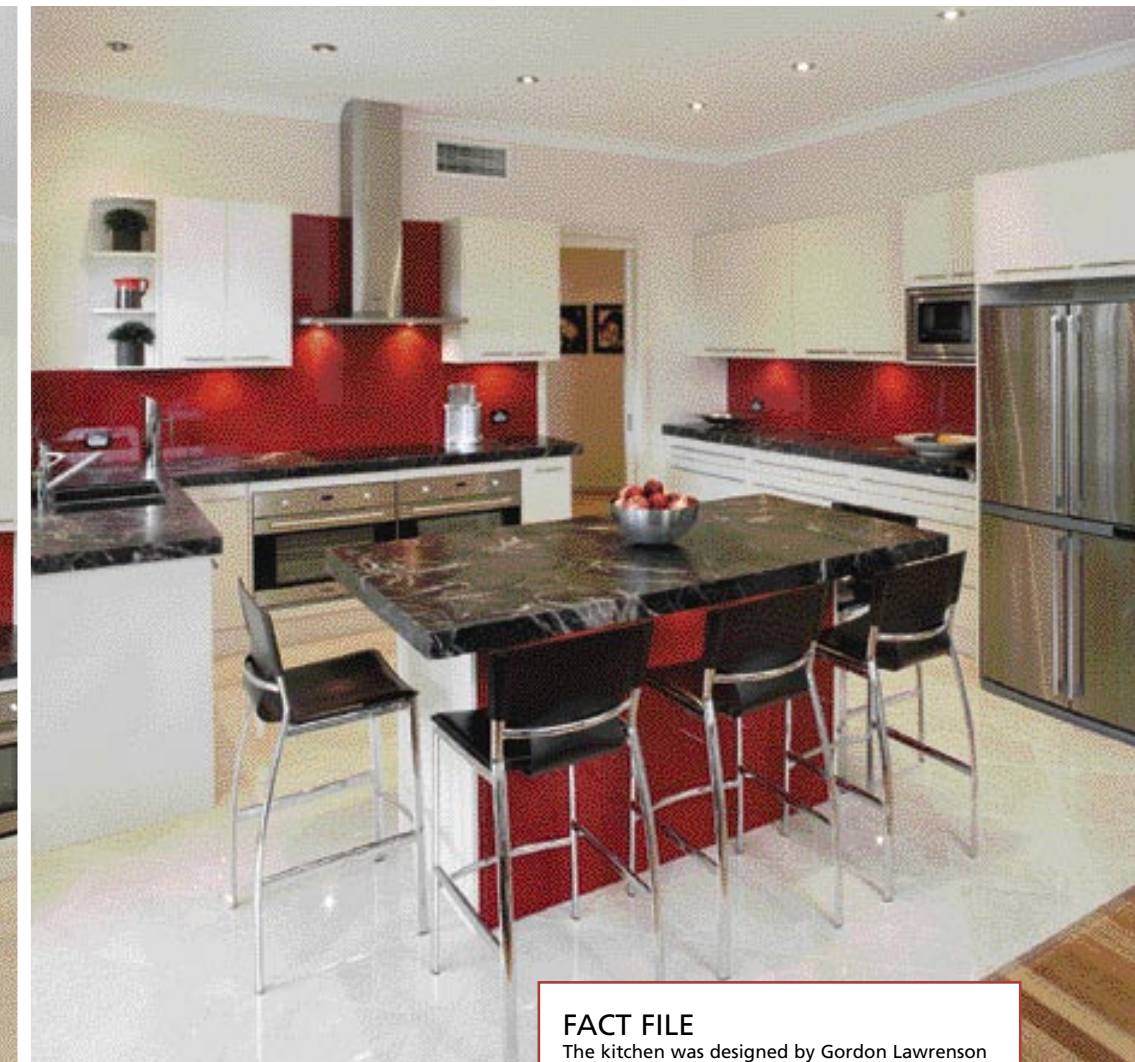


Red Hot Style

A splash of vibrant colour can go a long way — just have a squiz at this stunning example



FACT FILE

The kitchen was designed by Gordon Lawrenson and built by **KITCHENERS KITCHENS**
Unit 22/ 56 O'Riordan Street, Alexandria NSW 2015
Phone 1800 826 144
Email design@kitcheners.com.au
Website www.kitcheners.com.au
DOORS Polyurethane matt doors in Dulux Ecu
PANELS Matching polyurethane panels
HANDLES Bar satin stainless steel supplied by Kethy
BENCHTOP Marble Dark Emperadore Brown, honed and sealed and fitted by EMG
SPLASHBACK Red Box glass, fitted by Graphic Glass
KICKBOARDS Matching polyurethane in Dulux Ecu
FLOOR Marble Crema Marfil
PAINT Hog Bristle by Dulux
LIGHTING Halogen downlights
APPLIANCES include a Blanco oven, induction and sink, Miele slimline rangehood and dishwasher and Electrolux refrigerator
COST, approximately, for design, manufacture, installation, plumbing and electrical, \$35,000
Zeitgesit Photography

Contemporary styling and ultra-chic materials come together in this designer kitchen. Full of flair, this space reflects the vision of the owners far more than the previous dated pine kitchen. "The owners wanted a kitchen with a feature wall and lots of glass to produce that 'wow' factor," says designer Gordon Lawrenson. And that's exactly what Kitcheners Kitchens delivered.

As the centrepiece of the home it was important the kitchen be a stylish but still welcoming space where the family could gather for meals. The sizeable island bench topped in stunning Marble Dark Emperadore Brown certainly takes care of this. The bench incorporates a vibrant, high-gloss red feature panel to match the Red Box glass splashback dotted around the room.

Effectively positioned halogen and underbench

lights illuminate the island bar and stretch of glass, to create an eye-catching red hot warmth that complements the lightly toned ecru cabinetry and licks of Dulux Hog Bristle on the walls. Integrated European stainless-steel appliances complete the kitchen's high-end look and feel.

Packed with loads of innovative storage features including Blum soft-close doors and drawers, specifically designed cabinets for baking trays and a special oil drawer for cooking herbs, this kitchen not only looks splendid but is incredibly functional too.

To say the clients are thrilled with their new designer kitchen is certainly an understatement. "Sitting at night in our new kitchen with soft lights complementing the beautiful design is just divine," the owners conclude. **K&Q**